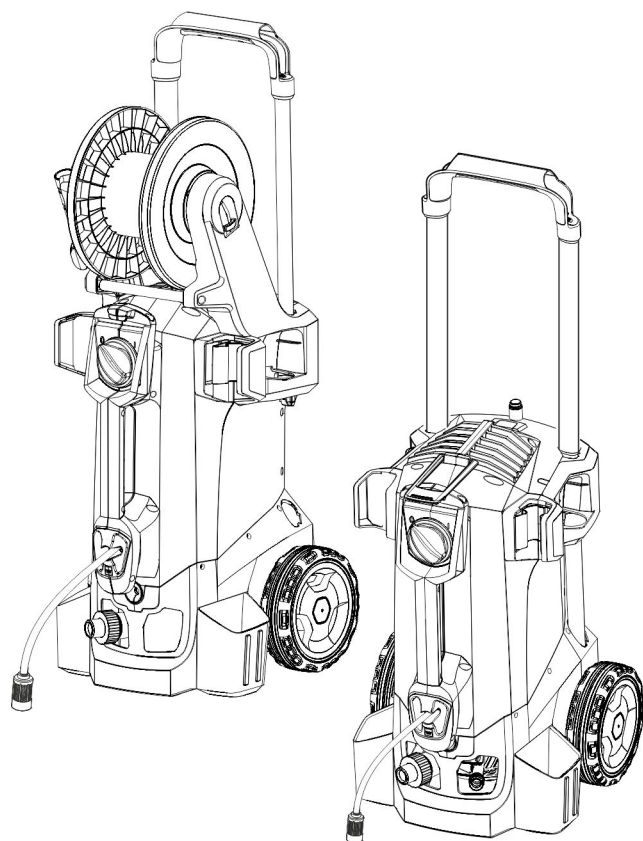


HD 5/12 C, HD 5/12 CX  
 HD 5/13 C, HD 5/13 CX  
 HD 5/15 C, HD 5/15 CX  
 HD 5/17 C, HD 5/17 CX  
 HD 6/13 C, HD 6/13 CX



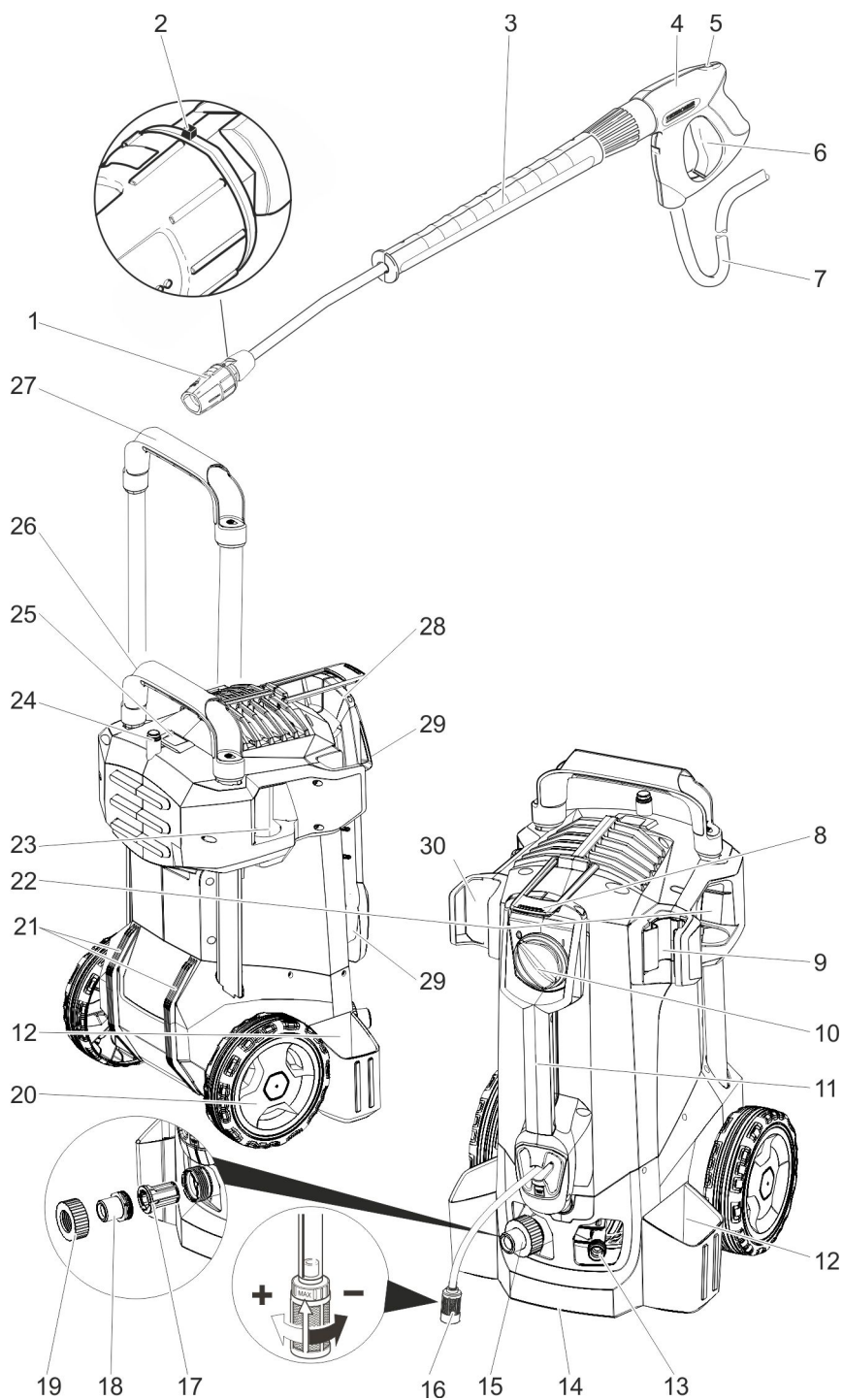
Deutsch	6
English	18
Français	30
Italiano	42
Nederlands	54
Español	66
Português	78
Dansk	90
Norsk	101
Svenska	112
Suomi	123
Ελληνικά	134
Türkçe	147
Русский	159
Magyar	172
Čeština	184
Slovenščina	196
Polski	207
Românește	219
Slovenčina	231
Hrvatski	243
Srpski	255
Български	267
Eesti	280
Latviešu	292
Lietuviškai	304
Українська	316
中文	329

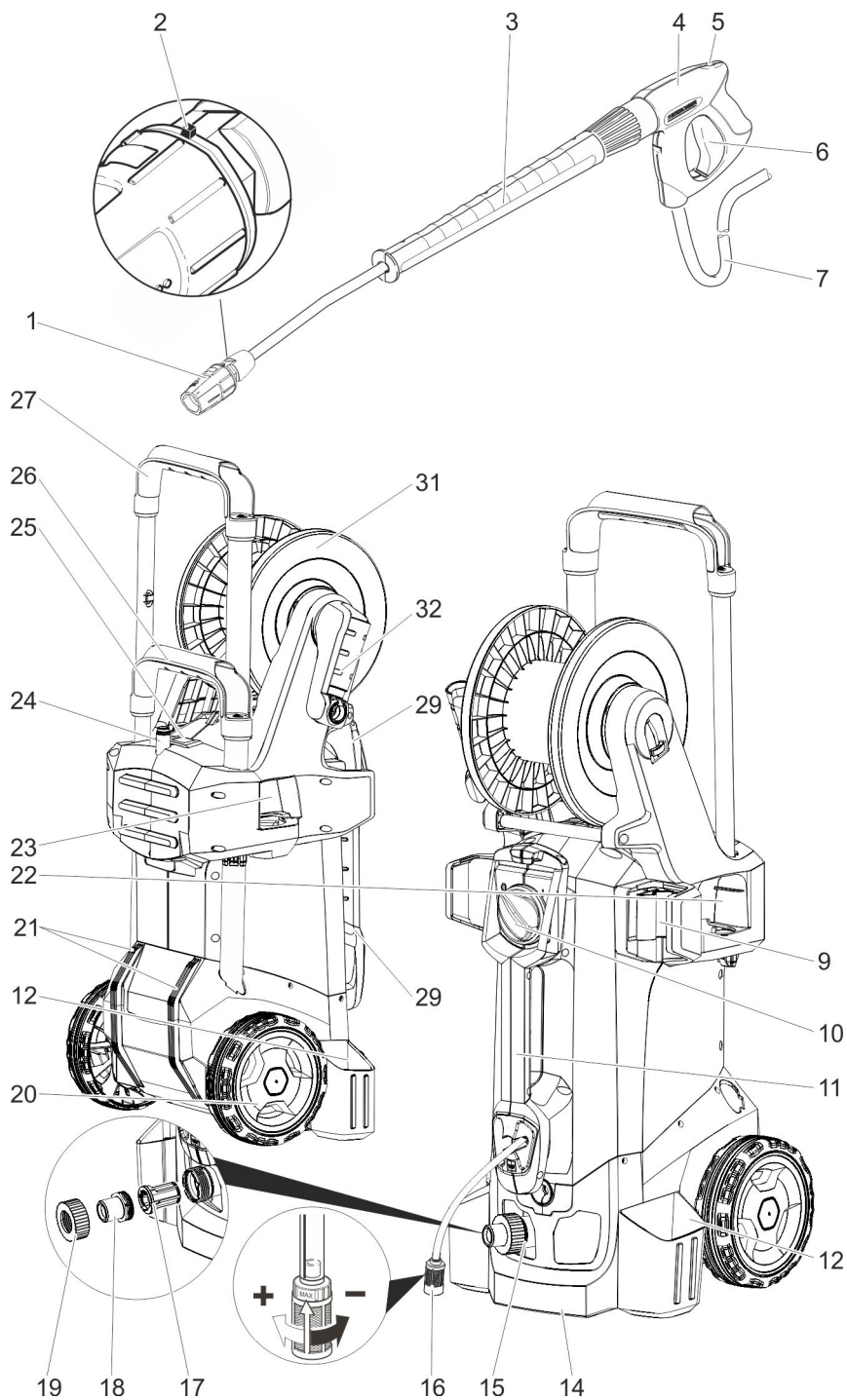
**Register and win!**  
[www.karcher.com/register-and-win](http://www.karcher.com/register-and-win)













Please read and comply with these original instructions prior to the initial operation of your appliance and store them for later use or subsequent owners.

## Contents

Device elements . . . . .	EN	1
Safety instructions . . . . .	EN	1
Proper use . . . . .	EN	2
Safety Devices . . . . .	EN	2
Environmental protection . . . .	EN	2
Before Startup . . . . .	EN	3
Start up . . . . .	EN	3
Operation . . . . .	EN	4
Transport . . . . .	EN	5
Storage . . . . .	EN	6
Care and maintenance . . . . .	EN	6
Troubleshooting . . . . .	EN	6
Accessories and Spare Parts . .	EN	7
Warranty . . . . .	EN	7
EC Declaration of Conformity .	EN	8
Technical specifications . . . . .	EN	9

## Device elements

Please unfold the front picture side

- 1 Nozzle
- 2 Marking of the nozzle
- 3 Spray lance
- 4 Trigger gun
- 5 Safety lever
- 6 Lever for trigger gun
- 7 High pressure hose
- 8 Rubber band (not with appliances with hose drum)
- 9 Spray lance holder with clamping, for transportation
- 10 Power switch
- 11 Carrying handle
- 12 Quiver for spray lance
- 13 High pressure connection
- 14 Handle
- 15 Water connection
- 16 Detergent suction hose with filter and detergent dosing
- 17 Sieve
- 18 Hose hub
- 19 Union joint
- 20 Wheel cap

- 21 Skid/parking runner
- 22 Nozzle rack for rotor nozzle (rotor nozzle is only included in the scope of delivery with model HD...Plus)
- 23 Nozzle rack for triple nozzle
- 24 Transport bracket for surface cleaner
- 25 Unlocking device push handle
- 26 Push handle, bottom (slid in)
- 27 Push handle, top (extended)
- 28 Storage compartment for hoses
- 29 Cable clamp
- 30 Spray lance holder without clamping
- 31 Hose drum
- 32 Crank

## Colour coding

- The operating elements for the cleaning process are yellow.
- The controls for the maintenance and service are light gray.

## Safety instructions

- Before first start-up it is definitely necessary to read the operating instructions and safety indications Nr. 5.951-949.0!
- Please follow the national rules and regulations for fluid spray jets of the respective country.
- Please follow the national rules and regulations for accident prevention of the respective country. Fluid spray jets must be tested regularly and the results of these tests must be documented in writing.

## Hazard levels

### **⚠ DANGER**

*Pointer to immediate danger, which leads to severe injuries or death.*

### **⚠ WARNING**

*Pointer to a possibly dangerous situation, which can lead to severe injuries or death.*

### **⚠ CAUTION**

*Pointer to a possibly dangerous situation, which can lead to minor injuries.*

### **ATTENTION**

*Pointer to a possibly dangerous situation, which can lead to property damage.*

## Symbols on the machine



High-pressure jets can be dangerous if improperly used. The jet may not be directed at persons, animals, live electrical equipment or at the appliance itself.

According to applicable regulations, the appliance must never be used on the drinking water net without a system separator. A suitable system separator by KÄRCHER or alternatively a system separator according to EN 12729 type BA must be used. Water that was flowing through a system separator is considered non-drinkable.



## Proper use

Use this high pressure cleaner exclusively for

- Cleaning using low pressure jet and detergent (for e.g. for cleaning machines, cars, buildings, tools),
- For cleaning using high pressure jet without detergent (for e.g. for cleaning facades, terraces, garden appliances).

For stubborn soiling we recommend the use of a rotor nozzle (only included in the scope of delivery with model HD...Plus)

### Quality requirements for water:

#### ATTENTION

Only clean water may be used as high pressure medium. Impurities will lead to increased wear and tear or formation of deposits in the appliance.

If recycled water is used, the following limit values must not be exceeded.

pH value	6,5...9,5
electrical conductivity *	Conductivity fresh water +1200 µS/cm
settleable solids **	< 0,5 mg/l
total suspended solids ***	< 50 mg/l
Hydrocarbons	< 20 mg/l
Chloride	< 300 mg/l
Sulphate	< 240 mg/l
Calcium	< 200 mg/l

Total hardness	< 28 °dH < 50 °TH < 500 ppm (mg CaCO <sub>3</sub> /l)
Iron	< 0,5 mg/l
Manganese	< 0,05 mg/l
Copper	< 2 mg/l
Active chloride	< 0,3 mg/l
free of bad odours	
* Maximum total 2000 µS/cm	
** Test volume 1 l, settling time 30 min	
*** no abrasive substances	

## Safety Devices

Safety devices serve for the protection of the user and must not be put out of operation or bypassed with respect to their function.

### Pressure switch

If the lever on the trigger gun is released the pressure switch turns off the pump, the high pressure jet is stopped. If the lever is pulled the pump is turned on again.

## Environmental protection

	The packaging material can be recycled. Please do not throw the packaging material into household waste; please send it for recycling.
	Old appliances contain valuable materials that can be recycled; these should be sent for recycling. Batteries, oil, and similar substances must not enter the environment. Please dispose of your old appliances using appropriate collection systems.

### Notes about the ingredients (REACH)

You will find current information about the ingredients at:

[www.kaercher.com/REACH](http://www.kaercher.com/REACH)

## Before Startup

### Attaching the Accessories

- Attach the wheel caps.
- Mount the nozzle on the spray lance (markings on the adjustment ring at the top).
- Connect spray lance to trigger gun.
- Release the unlocking device of the push handle.
- Pull the push handle out to its end position.

### In devices without hose drum:

- Fasten the high pressure hose to the high pressure connection.

### In devices with hose drum:

- Insert the crank in the hose drum shaft and lock it in.
- Before rolling up, stretch out the high pressure hose.
- Wind the high pressure hose in uniform layers on the hose drum by rotating the crank. Select the rotation direction in such a way that the high pressure hose does not get bent.

## Start up

### Electrical connection

#### **DANGER**

*Danger of injury by electric shock.*

- *It is imperative to connect the appliance to the electric mains by means of a plug. It is forbidden to permanently connect the appliance to the power supply. The plug serves for the disconnection from the mains.*
- *The plug and coupling of the extension cable used must be watertight.*
- *Use the extension cord that has an adequate cross-section (see "Technical Data") and unwind it fully from the cable drum.*

For connection values, see type plate/technical data.

- Unwind the mains cable and place it on the floor.
- Insert the mains plug into a socket.

### Water connection

#### Connection to the water supply

##### **WARNING**

*Observe regulations of water supplier.*

*According to applicable regulations, the appliance must never be used on the drinking water net without a system separator. A suitable system separator by KÄRCHER or alternatively a system separator according to EN 12729 type BA must be used.*

*Water that was flowing through a system separator is considered non-drinkable.*

##### **CAUTION**

*Always connect the system separator to the water supply, never directly to the appliance!*



For connection values refer to technical specifications

- Connect the supply hose (min. length 7.5 m, minimum diameter 1/2") to the water connection point of the machine and at the water supply point (for e.g. a tap).

#### **Note:**

*The supply hose is not included.*

- Open the water supply.

#### **Drawing in water from open reservoirs**

- Screw the suction hose with filter (order no. 4.440-238.0) to the water connection.
- Appliance ventilation:  
Unscrew the nozzle from the spray lance.  
Switch on the appliance and let it run until the water exiting is bubble-free.  
Let the appliance run for 10 seconds – then switch off the appliance switch.  
Repeat the procedure several times.
- Switch off the appliance and fit the nozzle again.



## Operation

### **⚠ DANGER**

*Risk of explosion!*

*Do not spray flammable liquids.*

*If the appliance is used in hazardous areas (e.g. filling stations) the corresponding safety regulations must be observed.*

### **⚠ DANGER**

*Long hours of using the appliance can cause circulation problems in the hands on account of vibrations.*

It is not possible to specify a generally valid operation time, since this depends on several factors:

- Proneness to blood circulation deficiencies (cold, numb fingers).
- Low ambient temperature. Wear warm gloves to protect hands.
- A firm grip impedes blood circulation.
- Continuous operation is worse than an operation interrupted by pauses.

In case of regular, long-term operation of the device and in case of repeated occurrence of the symptoms (e.g. cold, numb fingers) please consult a physician.

### **⚠ CAUTION**

*Clean engines only at places with corresponding oil separators (environmental safety).*

## High pressure operation

The appliance can be operated in a vertical or horizontal position.




### **Note:**

The appliance is equipped with a pressure switch. The motor starts up only when the lever of the pistol is pulled

- ➔ Device with hose drum:  
Roll off the high pressure hose totally from the hose drum.
- ➔ Set the appliance switch to "I".
- ➔ Unlock the trigger gun and pull the lever of the gun.

## Select spray type

- ➔ Close the hand spray gun.
- ➔ Turn the casing of the nozzle till the desired symbol matches the marking.

	High pressure circular spray (0°) for specially stubborn dirt
	Flat low pressure spray (CHEM) for operating using detergents or cleaning at low pressure.
	High pressure flat spray (25°) for large dirt areas

## Operation with detergent

### **⚠ WARNING**

*Unsuitable detergents can cause damage to the appliance and to the object to be cleaned. Use only those detergents that have been approved by Kärcher. Observe the dosage and other instructions provided with these detergents. For considerate treatment of the environment use detergent economically.*

*Follow the safety instructions for using detergents.*

Kärcher detergents ensure smooth functioning. Please consult us or ask for our catalogue or our detergent information sheets.

- ➔ Take out detergent suck hose.
- ➔ Adjust the suction volume of the detergent solution at the detergent filter.
- ➔ Suspend end of suction hose in a container filled with detergent.
- ➔ Set nozzle to "CHEM".

## Recommended cleaning method

- ➔ Spray the detergent sparingly on the dry surface and allow it to react, but not to dry.
- ➔ Spray off loosened dirt with the high-pressure ray.
- ➔ Set the suction flow on the detergent filter to the maximum quantity after operation.
- ➔ Start the appliance and rinse for one minute.

### Interrupting operation

- ➔ Release the lever of the trigger gun; the device will switch off.

#### Note:

When switching off the appliance, the water pressure is reduced by approx. 70%. This reduces the actuating force of the hand spray gun and the service life of the appliance is increased.

- ➔ Release again the lever of the trigger gun; the device will switch on again.

### Turn off the appliance

- ➔ Set the appliance switch to "0".
- ➔ Disconnect the mains plug from the socket.
- ➔ Shut off water supply.
- ➔ Activate trigger gun until device is pressure-less.
- ➔ Press the safety lever of the trigger gun to secure the lever of the pistol against being released accidentally.

### Storing the Appliance

- ➔ Place the spray lance with the trigger gun into the quiver for the spray lance and snap it into place in the spray lance holder.
- ➔ Wind the connection cable around the cable holder.
- ➔ Coil up the high pressure hose, hang it over the hose rack and secure it by means of the rubber band.  
or  
Coil up the high-pressure hose on the hose drum. Fold down the handle of the crank.
- ➔ Fasten the plug with the mounted clip.
- ➔ Press the unlocking device of the push handle and slide the push handle in.

### Frost protection

#### ATTENTION

*Frost will destroy the not completely water drained device.*

Store the appliance in a frost free area.

**If you cannot store it in a frost-free place:**

- ➔ Drain water.
- ➔ Pump in conventional frost protection agents through the appliance.

#### Note:

Use normal glycol-based anti-freezing agents for automobiles.

Observe handling instructions of the anti-freeze agent manufacturer.

- ➔ Operate device for max. 1 minute until the pump and conduits are empty.

### Transport

#### ⚠ CAUTION

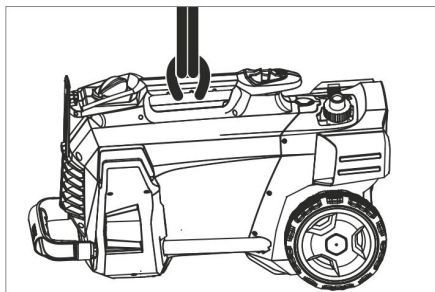
*Risk of personal injury or damage! Mind the weight of the appliance during transport.*

- ➔ In order to transport the appliance over longer distances, pull it behind you holding on to the push handle.
- ➔ In order to carry the appliance, hold on to the handles.
- ➔ In order to climb stairs, pull the appliance up step by step. The skids protect the casing from damage.
- ➔ When transporting in vehicles, secure the appliance according to the guidelines from slipping and tipping over.

### Transport bracket for surface cleaner

- ➔ Attach the connecting piece of the surface cleaner to the bolt at the high-pressure cleaner.
- ➔ Screw on the union nut by approx. 1 rotation.

### Transport by crane



- ➔ Attach the lifting device to the carrying handle of the appliance.

## Safety information about cranes

### **⚠ DANGER**

*Risk of injury due to machine dropping.*

- Adhere to the local accident prevention guidelines and safety notes.
- Check the carrying handle for damage prior to every transportation by crane.
- Check the lifting unit for damage prior to each transport by crane.
- Only lift the appliance using the carrying handle.
- Do not use stop chains.
- Protect the lifting device from inadvertent load release.
- Remove spray lance with trigger gun, nozzles, surface cleaner and other loose objects prior to transportation by crane.
- Do not transport any articles on the appliance during the lifting process.
- The appliance must only be transported by properly trained crane personnel.
- Do not stand below the load.
- Ensure that no persons are present in the immediate vicinity of the crane.
- Do not leave the appliance on the crane unattended.

## Storage

### **⚠ CAUTION**

*Risk of personal injury or damage! Consider the weight of the appliance when storing it.*

This appliance must only be stored in interior rooms.

## Care and maintenance

### **⚠ DANGER**

*Risk of injury by inadvertent startup of appliance and electrical shock.*

*Prior to all work on the appliance, switch off the appliance and pull the power plug.*

### Safety inspection/ maintenance contract

You can sign with your dealer a contract for regular safety inspection or even sign a maintenance contract. Please take advice on this matter.

## Before each use

- ➔ Check connection cable for damages (risk of electrical shock); get the damaged connection cable replaced immediately by an authorised customer service person/ electrician.
- ➔ Check the high pressure hose for damages (risk of bursting). Please arrange for the immediate exchange of a damaged high-pressure hose.
- ➔ Check appliance (pump) for leaks. 3 drops per minute are permitted and can come out from the lower side of the appliance. Call Customer Service if there is heavy leakage.

## Weekly

- ➔ Clean the sieve in the water connection.
- ➔ Clean filter at the detergent suck hose.

### Clean the sieve in the water connection

- ➔ Unscrew the covering nut.
- ➔ Pull out the hose nipple with the sieve.
- ➔ Clean the sieve from the outside and rinse it.

### Note:

Align the hexagon of the hose nipple in the appliance for connection.

- ➔ Insert the hose nipple with the sieve and tighten the union nut.

## Troubleshooting

### **⚠ DANGER**

*Risk of injury by inadvertent startup of appliance and electrical shock.*

- Prior to all work on the appliance, switch off the appliance and pull the power plug.
- Get the electrical components checked and repaired only by authorised customer service persons.
- Contact an authorised customer service person in case of problems not mentioned in this chapter or if you are in doubt or when you have been explicitly asked to do so.

### **Appliance is not running**

- Check connection cable for damages.
- Check the supply voltage.
- If the appliance is overheated:  
Set the appliance switch to "0".  
Allow machine to cool down at least for 15 minutes.  
Set the appliance switch to "1".
- Call Customer Service in case of electrical defects.

### **Pressure does not build up in the appliance**

- Set nozzle to "High pressure".
- Deaerate the appliance (see "Start-up")
- Clean the sieve in the water connection.
- Check water supply level (refer to technical data).
- Clean the nozzle.
- Replace the nozzle.
- Contact Customer Service if needed.

### **Pump leaky**

3 drops of water per minute are permitted and can leak from the bottom of the appliance.

- With stronger leak, have device checked by customer service.

### **Pump is vibrating**

- Check suction pipes for water and detergent and ensure that they are leak-proof.
- Set the suction flow on the detergent filter to the minimum quantity.
- Deaerate the appliance (see "Start-up")
- Contact Customer Service if needed.

### **Detergent is not getting sucked in**

- Set nozzle to "CHEM".
- Increase the suction flow at the detergent filter.
- Check/ clean detergent suction hose with filter.
- Contact Customer Service if needed.

## **Accessories and Spare Parts**

- Only use accessories and spare parts which have been approved by the manufacturer. The exclusive use of original accessories and original spare parts ensures that the appliance can be operated safely and trouble free.
- At the end of the operating instructions you will find a selected list of spare parts that are often required.
- For additional information about spare parts, please go to the Service section at [www.kaercher.com](http://www.kaercher.com).

## **Warranty**

The warranty terms published by the relevant sales company are applicable in each country. We will repair potential failures of your appliance within the warranty period free of charge, provided that such failure is caused by faulty material or defects in manufacturing. In the event of a warranty claim please contact your dealer or the nearest authorized Customer Service centre. Please submit the proof of purchase.

## EC Declaration of Conformity

We hereby declare that the machine described below complies with the relevant basic safety and health requirements of the EU Directives, both in its basic design and construction as well as in the version put into circulation by us. This declaration shall cease to be valid if the machine is modified without our prior approval.

**Product:** High pressure cleaner

**Type:** 1.520-xxx

### Relevant EU Directives

2006/42/EC (+2009/127/EC)

2004/108/EC

2000/14/EC

### Applied harmonized standards

EN 60335-1

EN 60335-2-79

EN 55014-1: 2006+A1: 2009+A2: 2011

EN 55014-2: 1997+A1: 2001+A2: 2008

EN 62233: 2008

EN 61000-3-2: 2006+A1: 2009+A2: 2009

EN 61000-3-3: 2008

HD 5/12 C, HD 5/12 CX, HD 513 C, HD 5/13 CX

EN 61000-3-11: 2000

HD 5/15 C, HD 5/15 CX, HD 5/17 C, HD 5/17 CX, HD 6/13 C, HD 6/13 CX

### Applied conformity evaluation method

2000/14/EC: Appendix V

### Sound power level dB(A)

HD 5/12 C, HD 5/13 C, HD 5/15 C, HD 5/17 C, HD 6/13 C

Measured: 86

Guaranteed: 88

HD 5/12 CX, HD 5/13 CX, HD 5/17 CX, HD 6/13 CX

Measured: 89


Guaranteed: 92

HD 5/15 CX

Measured: 87

Guaranteed: 90

  
H. Jenner  
CEO

  
S. Reiser  
Head of Approbation

Authorised Documentation Representative  
S. Reiser

Alfred Kärcher GmbH Co. KG  
Alfred-Kärcher-Str. 28 - 40  
71364 Winnenden (Germany)  
Phone: +49 7195 14-0  
Fax: +49 7195 14-2212

Winnenden, 2013/09/01

The undersigned act on behalf and under the power of attorney of the company management.

## Technical specifications

Type		HD 5/12 C	HD 5/12 C	HD 5/12 C
		HD 5/12 CX	HD 5/12 CX	HD 5/12 CX
		EU	GB	CH
Main Supply				
Voltage	V	230	230...240	230
Current type	Hz	1~ 50		
Connected load	kW	2,5	2,5	2,2
Protection (slow, char. C)	A	16	13	10
Type of protection	--	IPX5		
Extension cord 30 m	mm²	2,5		
Water connection				
Max. feed temperature	°C	60		
Min. feed volume	l/min	12		
Suck height from open container (20 °C)	m	0,5		
Max. feed pressure	MPa	1		
Performance data				
Working pressure	MPa	12	12	11,5
Nozzle size	--	035	035	038
Max. operating over-pressure	MPa	17,5	17,5	17,1
Water flow rate	l/min	8,3		
Detergent suck in	l/h	0...25		
Max. recoil force of trigger gun	N	21,3		
Values determined as per EN 60355-2-79				
Hand-arm vibration value	m/s²	3,6		
Uncertainty K	m/s²	0,9		
Sound pressure level L <sub>pA</sub> (CX)	dB(A)	72 (75)		
Uncertainty K <sub>pA</sub>	dB(A)	3		
Sound pressure level L <sub>WA</sub> + Uncertainty K <sub>WA</sub> (CX)	dB(A)	88 (92)		
Dimensions and weights				
Length	mm	380		
Width (CX)	mm	360 (370)		
Height	mm	930		
Typical operating weight (CX)	kg	23,7 (26)		

Type		HD 5/12 C	HD 5/12 C	HD 5/12 C	HD 5/13 C
		HD 5/12 CX			HD 5/13 CX
		AU	KAP	SA	EU
Main Supply					
Voltage	V	240	220		230
Current type	Hz	1~ 50	1~60		1~50
Connected load	kW	2,2	2,4		2,6
Protection (slow, char. C)	A	10	15	13	16
Type of protection	--	IPX5			
Extension cord 30 m	mm²	2,5			
Water connection					
Max. feed temperature	°C	60			
Min. feed volume	l/min	12			
Suck height from open container (20 °C)	m	0,5			
Max. feed pressure	MPa	1			
Performance data					
Working pressure	MPa	11,5	12		13
Nozzle size	--	038	036		034
Max. operating over-pressure	MPa	17,1	18		17,5
Water flow rate	l/min	8,3			
Detergent suck in	l/h	0...25			
Max. recoil force of trigger gun	N	21,3			22,2
Values determined as per EN 60355-2-79					
Hand-arm vibration value	m/s²	3,6	4,2		3,6
Uncertainty K	m/s²	0,9			
Sound pressure level L <sub>pA</sub> (CX)	dB(A)	72 (75)	74		72 (75)
Uncertainty K <sub>pA</sub>	dB(A)	3			
Sound pressure level L <sub>WA</sub> + Uncertainty K <sub>WA</sub> (CX)	dB(A)	88 (92)	90		88 (92)
Dimensions and weights					
Length	mm	380			
Width (CX)	mm	360 (370)			
Height	mm	930			
Typical operating weight (CX)	kg	23,7 (26)	25,2		23,7 (26)

Type		HD 5/15 C	HD 5/17 C	HD 5/17 C	HD 6/13 C
		HD 5/15 CX	HD 5/17 CX	HD 5/17 CX	HD 6/13 CX
		EU	EU	KAP	EU
Main Supply					
Voltage	V	230		220	230
Current type	Hz	1~ 50		1~60	1~ 50
Connected load	kW	2,8	3,0	3,0	2,9
Protection (slow, char. C)	A	16		15	16
Type of protection	--	IPX5			
Extension cord 30 m	mm²	2,5			
Water connection					
Max. feed temperature	°C	60			
Min. feed volume	l/min	12			13
Suck height from open container (20 °C)	m	0,5			
Max. feed pressure	MPa	1			
Performance data					
Working pressure (CX)	MPa	15 (15)	17 (17)	16,5 (16,5)	13 (13)
Nozzle size	--	032	027	030	038
Max. operating over-pressure	MPa	20			19
Water flow rate	l/min	8,3	8,1	8,0	9,8
Detergent suck in	l/h	0...25			
Max. recoil force of trigger gun	N	23,8	25,4		26,6
Values determined as per EN 60355-2-79					
Hand-arm vibration value	m/s²	2,4			4,1
Uncertainty K	m/s²	0,7			0,9
Sound pressure level L <sub>pA</sub> (CX)	dB(A)	72 (74)	72 (75)	75	72 (75)
Uncertainty K <sub>pA</sub>	dB(A)	3			
Sound pressure level L <sub>WA</sub> + Uncertainty K <sub>WA</sub> (CX)	dB(A)	88 (90)	88 (92)	91 (91)	88 (92)
Dimensions and weights					
Length	mm	380			
Width (CX)	mm	360 (370)			
Height	mm	930			
Typical operating weight (CX)	kg	25,2 (27,5)			



Type	HD 6/13 C		HD 6/13 C	HD 6/13 C	HD 6/13 C
			HD 6/13 CX		
		AR	GB	KAP	SA
Main Supply					
Voltage	V	220	230...240	220	
Current type	Hz	1~50		1~ 60	
Connected load	kW	2,9		2,9	2,8
Protection (slow, char. C)	A	16	13	15	13
Type of protection	--	IPX5			
Extension cord 30 m	mm²	2,5			
Water connection					
Max. feed temperature	°C	60			
Min. feed volume	l/min	13			
Suck height from open container (20 °C)	m	0,5			
Max. feed pressure	MPa	1			
Performance data					
Working pressure	MPa	13			12,5
Nozzle size	--	038		042	043
Max. operating over-pressure	MPa	19		18	
Water flow rate	l/min	9,8		10,0	
Detergent suck in	l/h	0...25			
Max. recoil force of trigger gun	N	26,6			
Values determined as per EN 60355-2-79					
Hand-arm vibration value					
Hand-arm vibration value	m/s²	4,1		3,7	
Uncertainty K	m/s²	0,9			
Sound pressure level L <sub>pA</sub> (CX)	dB(A)	72 (75)		73	
Uncertainty K <sub>pA</sub>	dB(A)	3			
Sound pressure level L <sub>WA</sub> + Un-certainty K <sub>WA</sub> (CX)	dB(A)	88 (92)		89	
Dimensions and weights					
Length	mm	380			
Width (CX)	mm	360 (370)			
Height	mm	930			
Typical operating weight (CX)	kg	25,2 (27,5)		25,2	